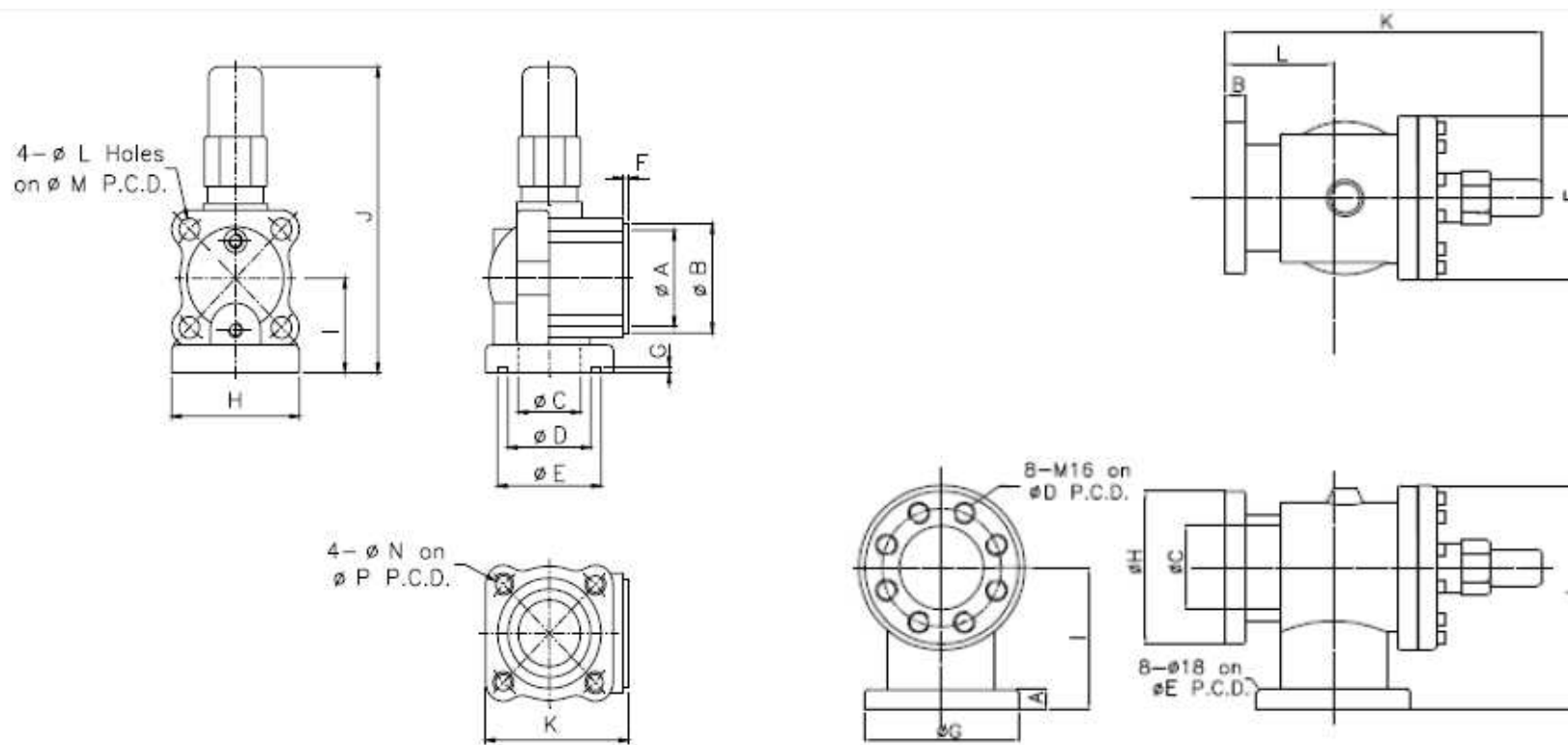


Información tomada de: www.friotek.com

Válvulas de Cierre para compresores de refrigeración



Dimension of stop valve

5" Suction stop valve

Dia.	Dimensions															
	A	B	C	D	E	F	G	H	I	J	K	L	M	N	P	
1 1/2"	60	75	36	59	76	6	5	106	75	256	115	18	105	M16x2	105	
2"	70	90	60	69	91	6	5	122	86	280	128	18	120	M16x2	120	
2 1/2"	90	110	67	89	111	6	5	137	95	307	153	18	140	M16x2	140	
3"	100	120	80	99	121	6	5	154	117	398	177	22	160	M20x2.5	160	
4"	125	145	105	124	146	6	5	171	130	445	201	22	185	M20x2.5	185	

Dia.	Dimensions												
	A	B	C	D	E	F	G	H	I	J	K	L	
5"	30	30	126	194	194	248	230	230	214	338	474	161	

* Specification of stop valve

Maximum working pressure	Hydrostatic pressure test	Refrigerant	Temperature range
28 kg / cm ² G	42 kg / cm ² G	HFC, HCFC	-40°C~150°C